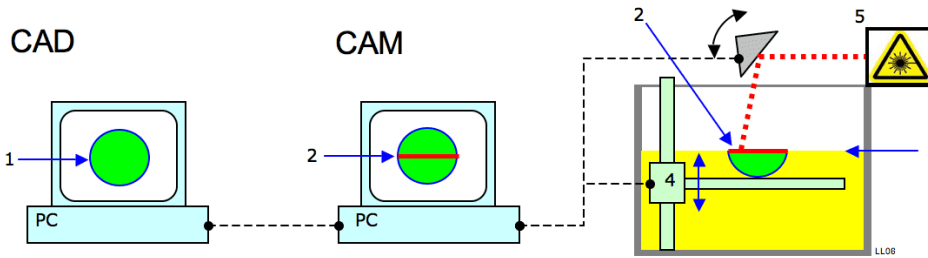


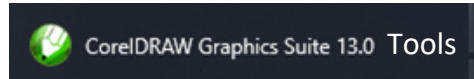


Design Technology Y9 Jewellery Project

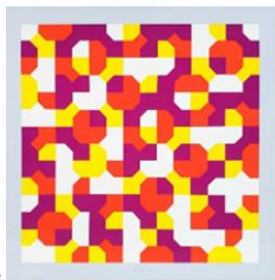
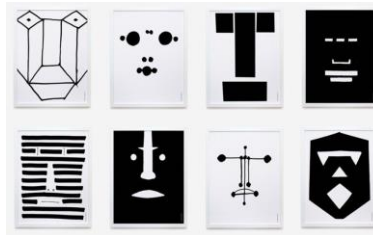
Tatty Devine is a jewellery brand which specialises in laser cut acrylic (plastic) jewellery.



Computer Aided Design Computer Aided Manufacture Laser cutter



Bruno Munari was "one of the greatest creators of 20th-century art, design and graphics". He was an Italian artist, designer, and inventor who contributed fundamentals to many fields of visual arts in modernism, futurism, and concrete art. He once said, "Art shall not be separated from life: things that are good to look at, and bad to be used, should not exist". His work is bold, colourful and can be comical. He uses symmetry and geometric shapes/patterns to create intriguing, figurative and graphical art.



Tool	Name	Description
	Pick tool	Lets you select and transform objects.
	Shape tool	The Shape tool lets you edit the shape of objects.
	Zoom tool	The Zoom tool lets you change the magnification level in the Drawing window.
	Freehand tool	The Freehand tool lets you draw lines and curves.
	Rectangle tool	The Rectangle tool lets you draw rectangles and squares.
	Ellipse tool	Lets you draw ellipses and circles.
	Pentagon tool	Lets you draw polygons and stars.
	Basic shapes tool	Lets you choose from a full set of shapes, including hexagram, a smiley face, and a right-angle triangle.
	Text tool	Lets you type words directly on the screen as artistic text or a paragraph text.
	Interactive distortion tool	Lets you apply a Push or Pull distortion, a Zipper distortion, or a Twister distortion to an object.
	Eyedropper tool	Lets you select a fill from an object on the Drawing window.
	Outline tool	Opens a flyout that lets you set the outline properties.
	Fill tool	Opens a flyout that lets you set fill properties.
	Interactive fill tool	Lets you apply various fills.

A Specification is ; a detailed description of the design and materials used to make something



A Graphic Designer

Communicates ideas through visual images using typography, colour and images. They create products like logos, websites advertising and packaging.

Smart Materials; Smart materials are materials that have properties which change reversibly, ie can change easily but can then easily change back, depending on changes in their surroundings.



MOISTURE LEVEL = GOOD

Hydrochromic pigments

Hydrochromic pigments **change when they come into contact with water**. Examples include colour-changing novelty mugs, colour-changing nappies when wet, moisture testers for plants and novelty t-shirts.

Thermochromic pigments

Thermochromic pigments **change colour at specific temperatures**. Examples include colour-changing novelty mugs, colour-changing spoons, battery power indicators and forehead thermometers.



Photochromic pigments

Photochromic pigments **change colour when exposed to light**. This can be used in clothing but is most commonly found in photochromic lenses for glasses, which darken when exposed to ultraviolet light. This means that these glasses act as sunglasses on sunny days, but quickly change back to normal glasses when the lenses are no longer in sunlight.



LOW UV LIGHT LEVEL