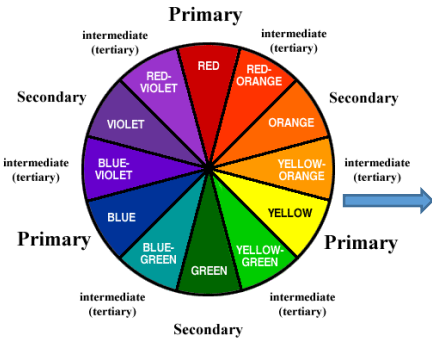




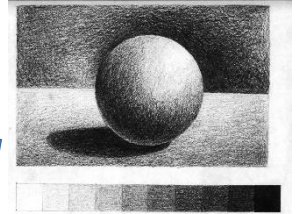
Art and Design

Y7 Autumn 1: Formal Elements

All Artworks are built using the visual or formal elements. These **FORMAL ELEMENTS** are an expressive language.

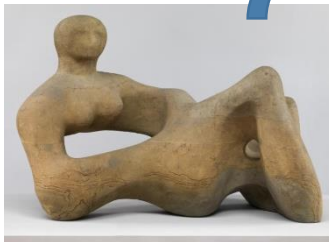


COLOUR- Primary, secondary, tertiary, warm and cold. Another word for colour is 'Hue'. Colours can be very pure, with high intensity. They can also be lightened using black or white



TONE – Also known as value, is the lightness or darkness of something. Different values of tone are created by shading

PATTERN – When you repeat a shape/motif or design many times



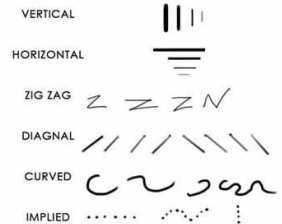
FORM – It is a 3D shape. Sculpture uses form because it has height, width and depth.



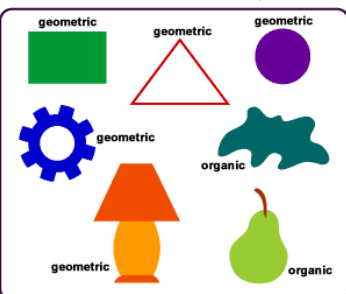
TEXTURE – The roughness and smoothness. The way something feels or looks like it feels. Also called surface quality

LINE – Different lines express different emotions and ideas. A line is path made by a moving point

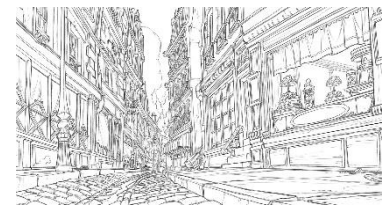
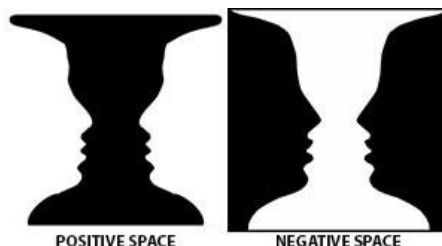
6 LINE TYPES



Shape – The two groups of shapes are Geometric and Organic. Shape is an area enclosed by a line.



SPACE – You can not have shape or form without space. The negative space creates the image.



COMPOSITION – The way that you arrange, place and position shapes, colours and lines on a surface

